

# CONNECTIONS

## RESIDENTIAL

### Our Designs - 2 Bed

### Product Type



**2 Bed**



**1 Bath**



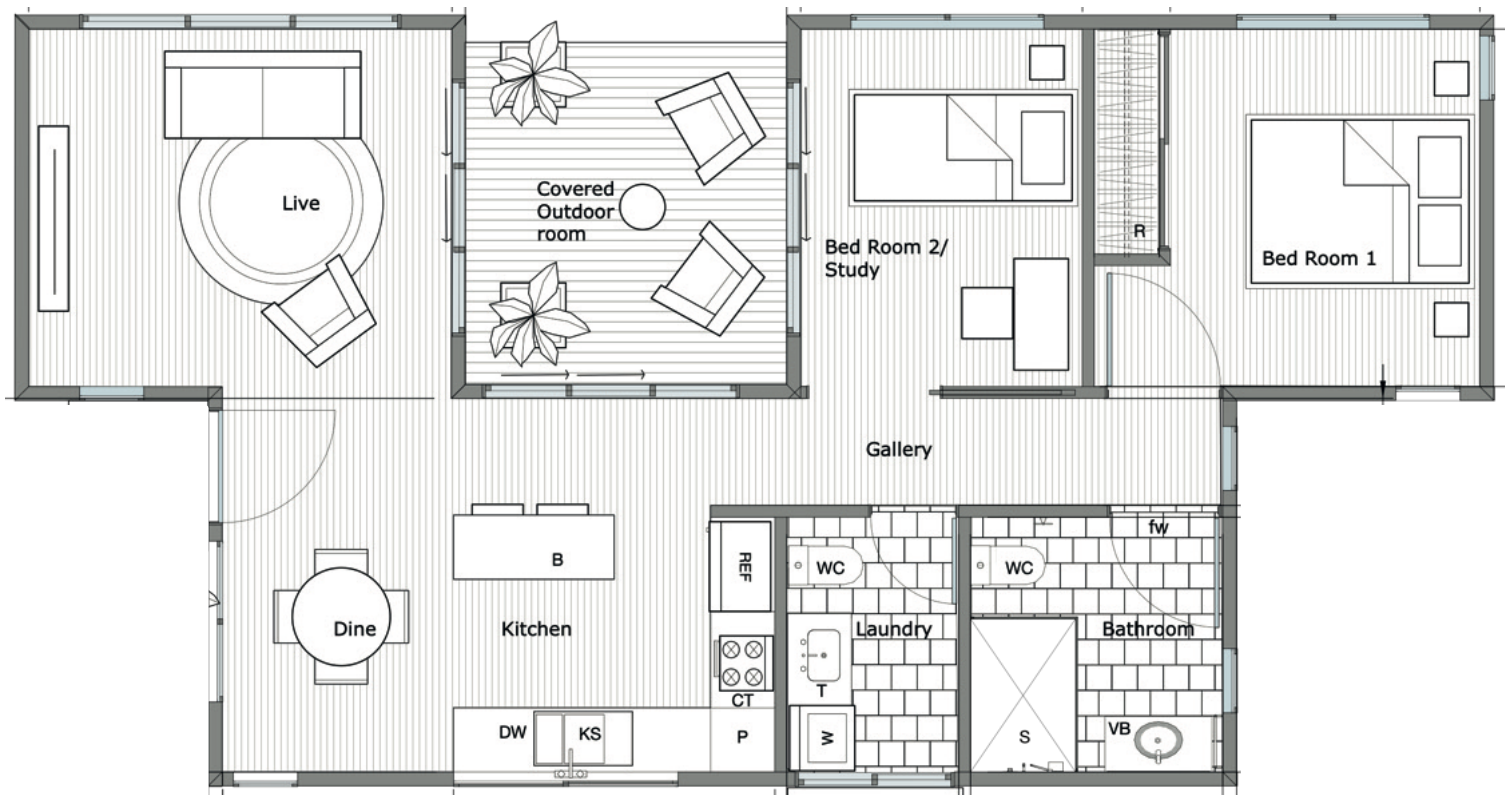
**73m<sup>2</sup>**



**\$379k\***







## Product Description

### **A self-contained, two-bedroom dwelling that matches home-level comfort**

Inside, a light-filled open-plan living zone anchors the home, with a full-size kitchen and wide sliders that open to a covered deck for easy indoor–outdoor living. Bedrooms are zoned away from the living area for privacy and include built-in robes. A well-planned bathroom and a separate laundry come standard. Premium, low-maintenance finishes, quality hardware, and efficient insulation/glazing make it comfortable year-round, while the panelised build delivers crisp detailing and a fast, tidy install on site.

## Design Highlights

- Open-plan living to deck/alfresco
- Full-size kitchen (upgrade appliance packs available)
- Built-in robes to both bedrooms
- Dedicated laundry + linen storage
- Durable exterior cladding and roof systems for QLD conditions
- Efficient insulation, cross-ventilation and flyscreens as standard

## Find Out More:

**P: 1300 023 171**



**CONNECTIONS**  
RESIDENTIAL